



When the **tough** gets going

Our tried and tested standard and special solutions make it possible for us to offer top performance, functionality and safety in mining.

Customer-specific SP-H
slew drive with closed
housing for a cutting outrigger



Deep Mining

IMO slew drives

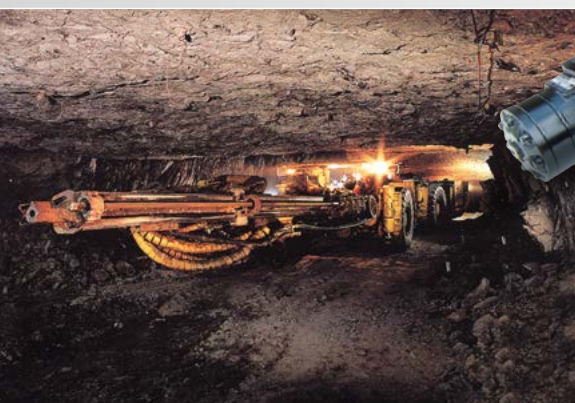
- pinion and worm driven versions
- closed housing for harsh environmental conditions
- max. torques up to 450 kNm
- max. breakaway torque load up to 1200 kNm
- raceway diameters up to approx. 1000 mm



- blast-hole drilling
- cutting outrigger
- erectors
- working platforms
- ...

Rotary, swivel, and slewing tasks in one compact solution. Available in a broad offering of economical standard solutions or as a tailor-made customer solution.

Azimuth slewing device WD-HC 0220 with location security for blast-hole drilling (securing device with extending end-face gears)



Your Advantages

for purchasing

- customer-specific and standard solutions
- one unit instead of individual components
- low overall costs

for service

- sturdy – for the harshest of mining conditions
- low maintenance costs
- service and spare parts available worldwide
- long service life

for engineering

- compact and space-saving
- reduces construction costs
- closed housing for highest level of operational safety
- suitable for use under the most extreme conditions
- high torques despite low weight
- open inner diameter for hydraulic lines

for end customers

- enclosed gear meshing, high level of operational safety
- ready for installation with a sleek clean appearance



Slew drive in the WD-L range for a special device for insertion of wall reinforcement

Mine vehicle with horizontal swiveling and telescoping platform, whose arm is moved by a WD-H 0300 slew drive



IMO

made in Gremsdorf,
Germany

More than 25 years on your side.

Certifications

- ISO 9001
- ISO 14001
- OHSAS

Headquarters

IMO GmbH & Co. KG
Imostr. 1
91350 Gremsdorf
Germany

Tel. +49 9193 6395 - 4434
Fax +49 9193 6395 - 4140
mining@imo.de

Your contact in the US

IMO USA Corp.
Tel. +1 843 695-6200
americas@imo.us